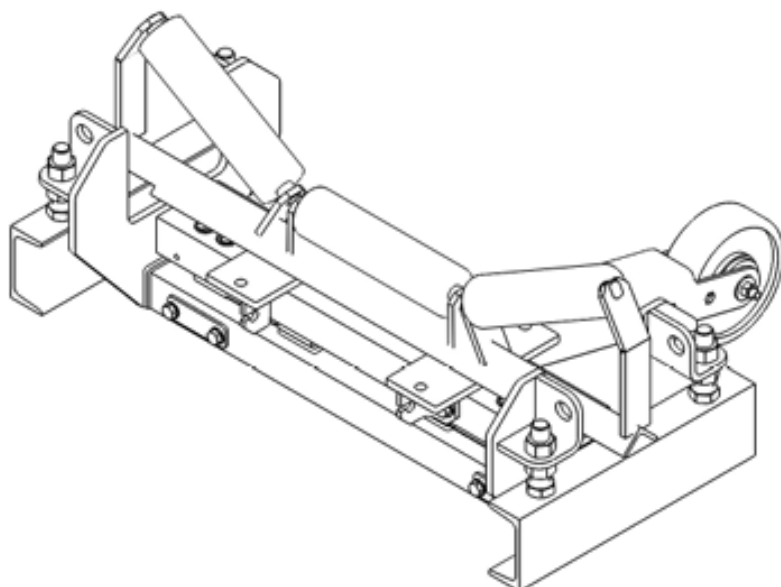


The **WPL automatic conveyor scale** is designed for flow weighing and summing up bulk materials transported on a conveyor belt.

Thanks to its simplicity, it is an extremely economical solution that will work even in difficult working conditions. Its small dimensions allow the scale to be installed even where space is limited, e.g., on mobile screens. Levelling the structure with screws allows the weighing roller to be optimally adjusted to the level of the adjacent rollers.



### Advantages:

- The most affordable conveyor scale in our offer.
- Easy adjustment of the scale level.
- Requires little space for installation.



#### TECHNICAL PARAMETERS OF THE SCALE

- Flow rate up to 4,000 t/h.
- $\pm 1 \div 2\%$  within the range of 20-100% of nominal load.
- Belt width 500 ÷ 1200 mm.
- Maximum ambient temperature up to 50 °C.
- Measuring bridge length from 500 mm to 1500 mm.

#### CONVEYOR REQUIREMENTS

- Inclination up to  $\pm 20^\circ$ .
- 1 or 3-roller system.
- Setting of sets in a 3-roller system up to  $35^\circ$ .
- Radial runout tolerance of rollers 0.2 mm within the scale.
- Gravity tension
- Covers against atmospheric factors (wind, rain, snow).

#### MEASURING SYSTEM

- The scale is based on 1 or 2 class C3 strain gauge sensors made of aluminum, with IP67 protection rating.
- The scale comes with a speed sensor in the form of a CPW, CPE, or Whirligig tachometer wheel.



#### CONTROL SYSTEMS

- 1020.
- SGM800.
- Flex 2100/Flex.

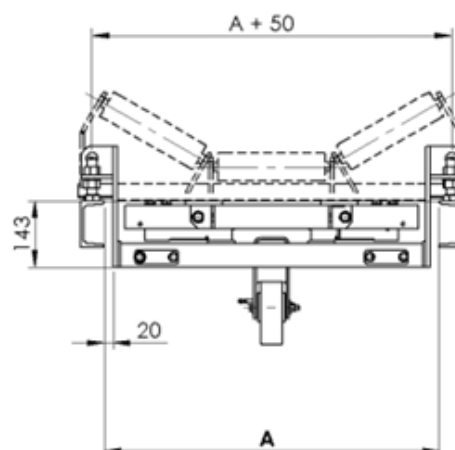
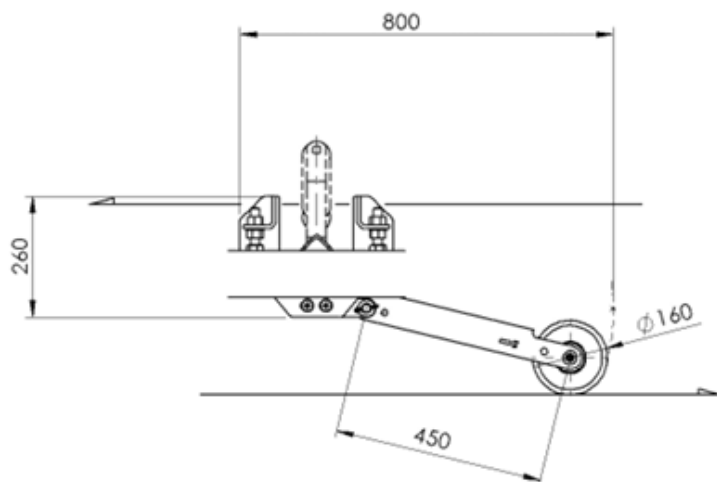
#### DOSAGE RANGE

The scale is made of carbon steel, powder coated with polyester paint. Upon request, it can be made:

- With a C5 paint coating class.
- From 304 stainless steel.
- From electrochemically galvanized steel.

#### ADDITIONAL OPTIONS

- Possibility to control material flow on the conveyor.
- Possibility to control material portion loading.
- Designed for Ex explosion hazard zones.



A - internal distance of the conveyor frame  
 $A = 600 \dots 1500 \text{ mm}$

