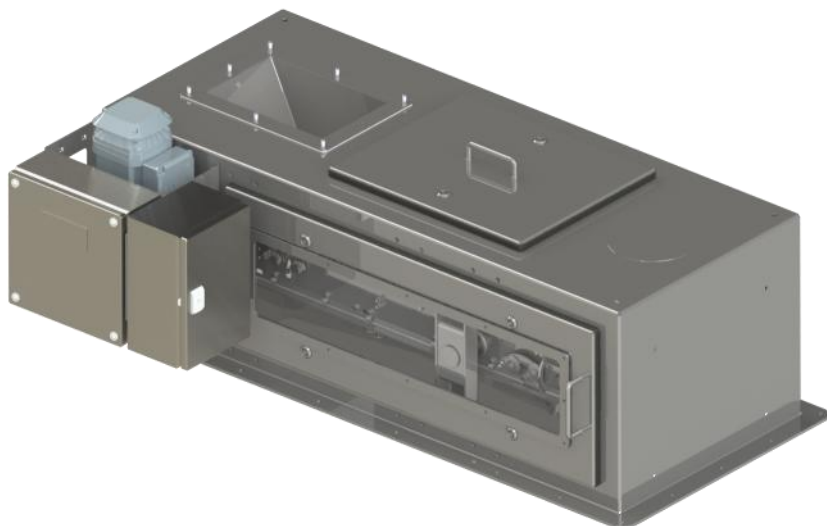


## DESCRIPTION



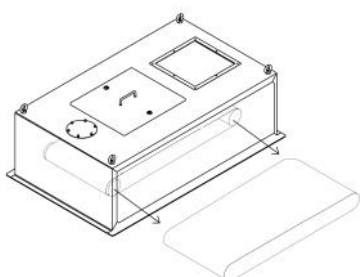
The DTU belt weighfeeder is a universal solution for the gravimetric feeding of bulk solids at rates up to 40,000 kg/h. Thanks to its hygienic design, which allows easy disassembly and cleaning of selected components, the weighfeeder is particularly suited to applications in the food industry.

Flow control is achieved by varying the belt speed. A gravity tensioning system extends belt life and improves weighing accuracy, whilst internal and external belt scrapers remove residual material from the belt. The weighfeeder also features a belt tracking system to prevent belt misalignment and a quick belt-change mechanism that does not require retensioning.

Depending on the control system selected, the unit can operate in continuous or batch feeding mode. It can also be used solely for material flow measurement.

The dust-tight enclosure allows connection to a dust extraction system. Removable side covers are fitted with polycarbonate inspection windows.

### QUICK BELT CHANGE:



## SPECIFICATION

- Feeding accuracy: **<0.5%** of setpoint
- Belt width: **300 or 600 mm**
- Gravity belt tensioning
- Operating ambient temperature: **0 to 50 °C**
- Polyurethane/PVC belt with FDA approval
- **3 × 400 V AC** motor, **0.18, 0.25** or **0.37 kW** (depending on gear ratio)
- Belt speed controlled via variable frequency drive (VFD)

## CAPACITY

- **100 – 20,000 kg/h** (300 mm belt width)
- **200 – 40,000 kg/h** (600 mm belt width)

Turndown ratio: 1:10 (min to max)

Manual adjustment of the pre-gate height further extends the operating range

## WEIGHING SYSTEM

- Single load cell weighing system, accuracy class C3, stainless steel, IP67
- Speed sensor
- Belt slip detection
- Belt misalignment detection

## CONTROL SYSTEMS

Material flow measurement

- 1020
- SGM800
- FLEX 2100/FLEX
- SIWAREX WP241

Continuous and batch feeding

- FLEX 2100/FLEX

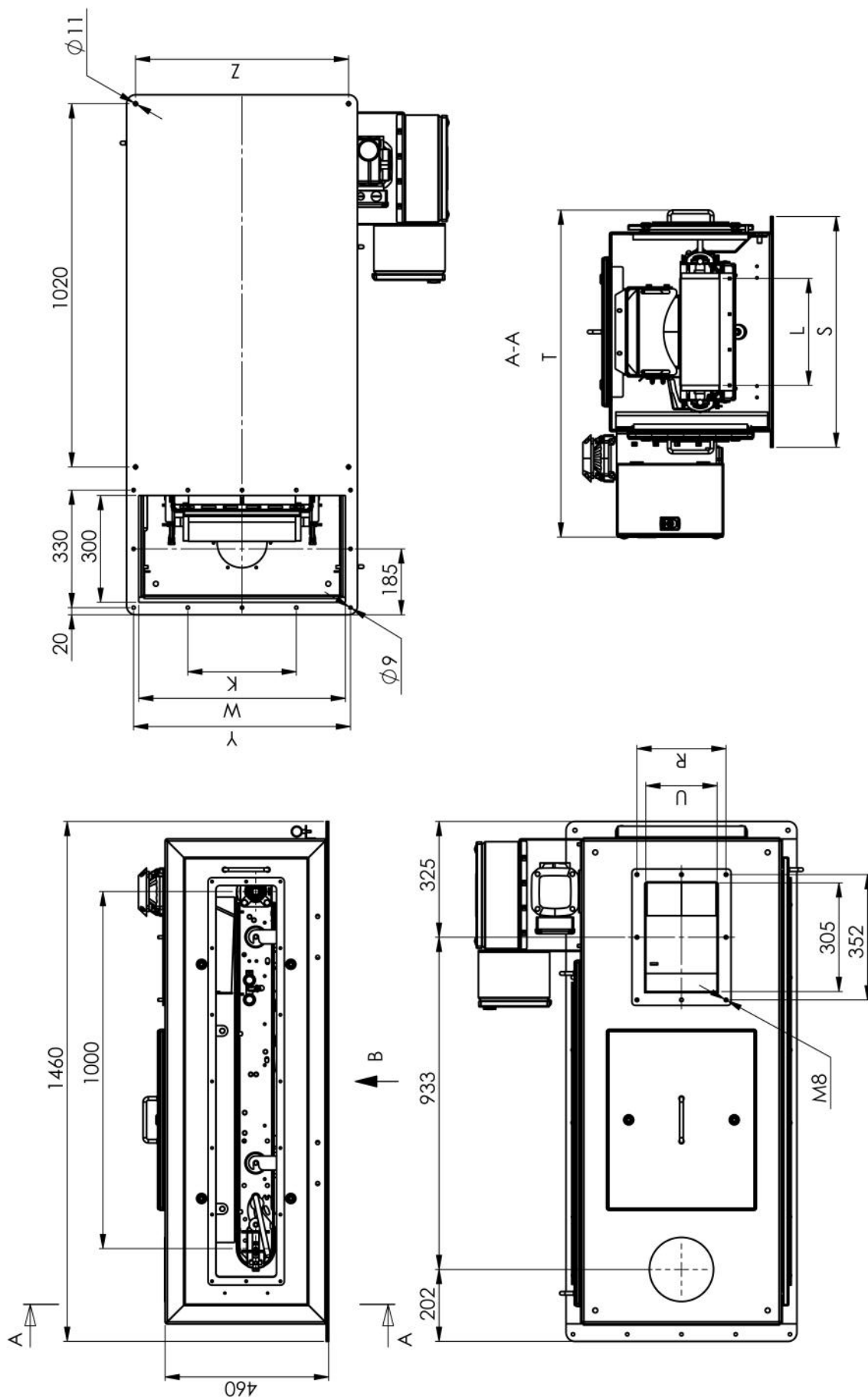
## CONSTRUCTION

- Weighframe manufactured from stainless steel 304
- Belt scraper inserts made of PE-UHMW with FDA approval
- Drive roller coated with FDA-approved polymer
- Dust-tight enclosure in stainless steel
- Optional lateral slide-out frame for cleaning or belt replacement

## OPTIONS

- Stainless steel 316L construction
- Vibrating inlet
- Pre-feeder control capability
- ATEX-rated design for explosive atmospheres
- Aseptic motor
- Belt rated for material temperatures up to 170 °C
- Load rated IP68/IP69K

## DIMENSIONS



Belt width Bandbreite	S	T	U	R	K	W	Y	Z
300	648	918	200	250	304,5	580	609	598
600	946	1242	500	273,5..547	303..606	880	909	896